

My Life

at Vinay Unique



MahaRERA No.: P99000012052
maharera.mahaonline.gov.in



ABOUT PROJECT

Project **Gardens** is a prestigious and luxurious residential project undertaken by Vinay Unique Group. The project plan is set across the vicinity of Mumbai and is closely connected to supermarkets, hospitals, schools, colleges, government institutions, restaurants, etc. The location is a top spot for a serene yet sophisticated living. For a lifestyle that deserves an upgrade, Project Gardens is the perfect choice. This remarkable project by Vinay Unique Group revolutionizes the concept of modern and classy living by making it accessible to the common folk. It aims at enhancing the lives of the residents by fusing modernity with affordability.

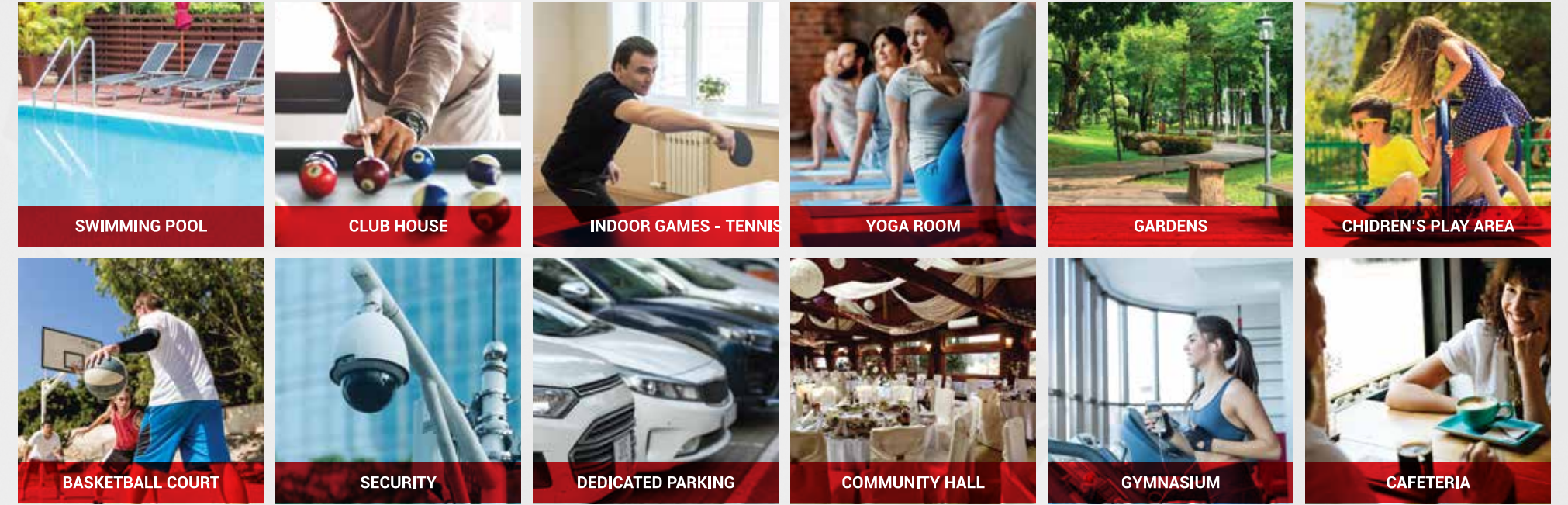
The **1BHK**, **2BHK**, and **3BHK** flats are being constructed in the rapidly expanding residential vicinity of the city. It is a project of remarkable pomp and flair, adding a great deal of leverage to a better quality lifestyle at affordable prices.



MASTER PLAN

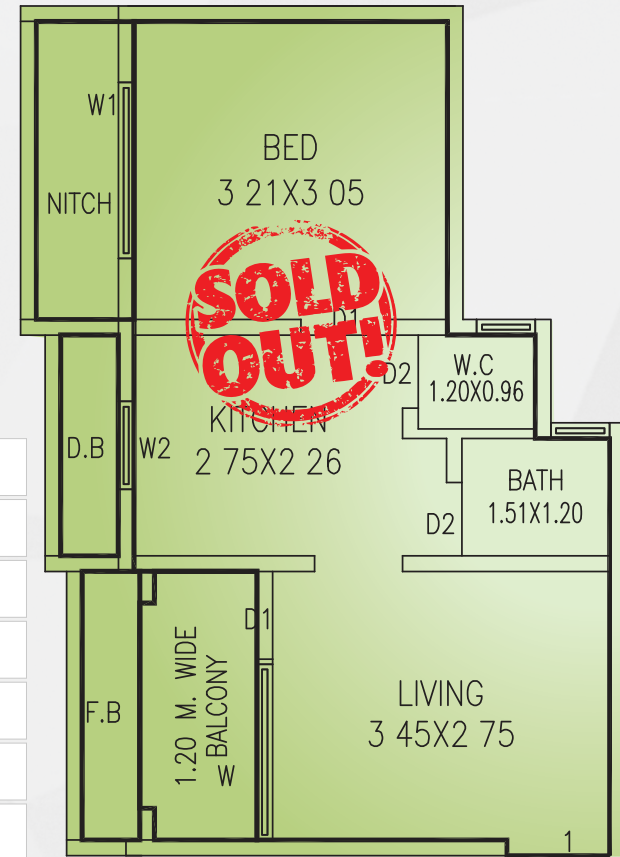
A home is not just four walls, it is where your story begins. Now is the time to give yourself & your loved ones the lifestyle you've always dreamt of.

"Come fall in love at Vinay Unique Gardens."



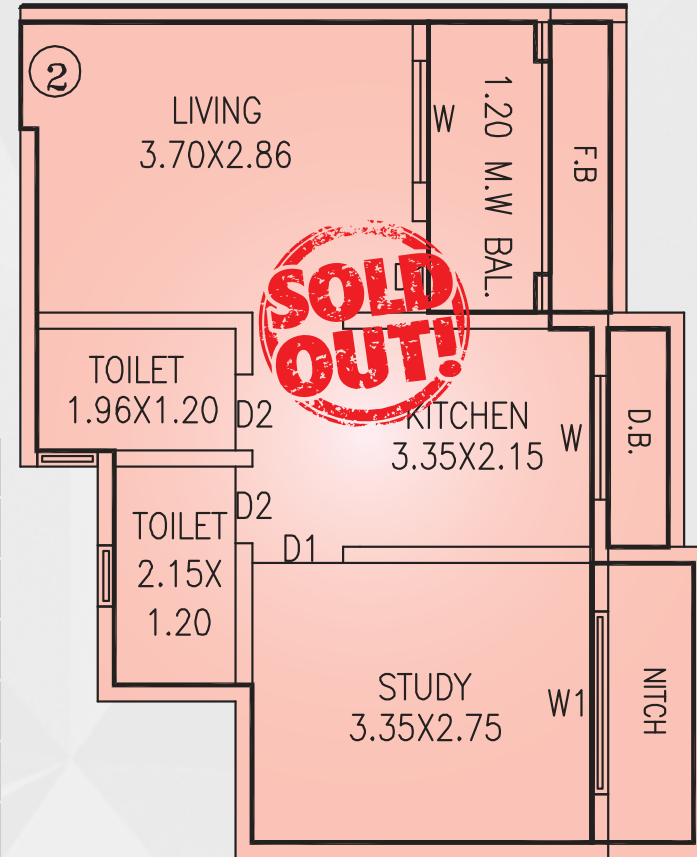
High Speed Elevators • Common Area Lighting • Grand Entrance Lobby
 Elders Corner • Common Toilets • Generator Backup For Lift • Open Parking

1BHK



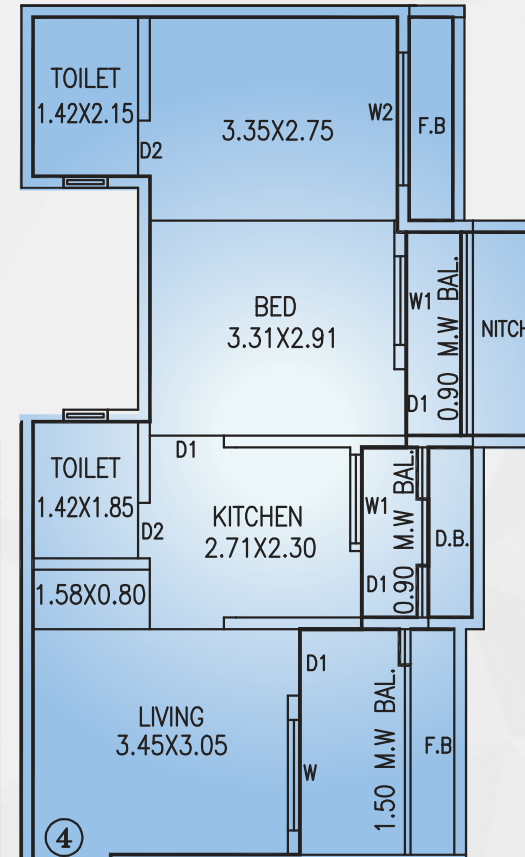
TYPE	1BHK
CARPET AREA	31.43
ENCLOSED AREA	3.2
FLOWER BED	1.62
DRY BALCONY	1.33
NICHE	2.75
TOTAL AREA	434

1BHK



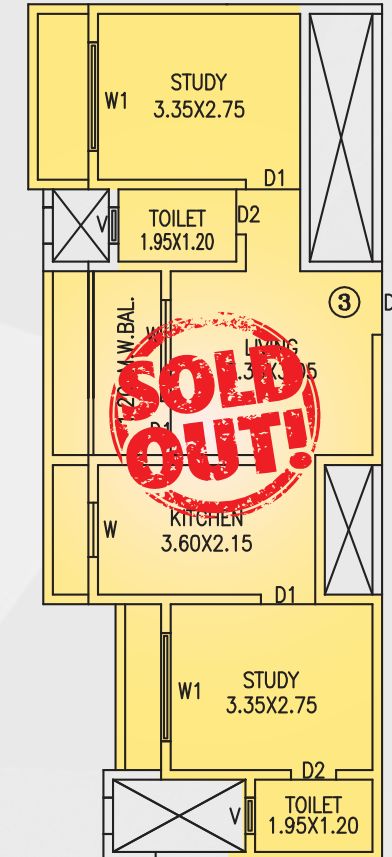
TYPE	1BHK
CARPET AREA	34.6
ENCLOSED AREA	3.32
FLOWER BED	1.69
DRY BALCONY	1.27
NICHE	2.75
TOTAL AREA	470

2BHK



TYPE	2BHK
CARPET AREA	50.7
ENCLOSED AREA	3.5
FLOWER BED	3.42
DRY BALCONY	1.35
NICHE	2.75
TOTAL AREA	664

2BHK



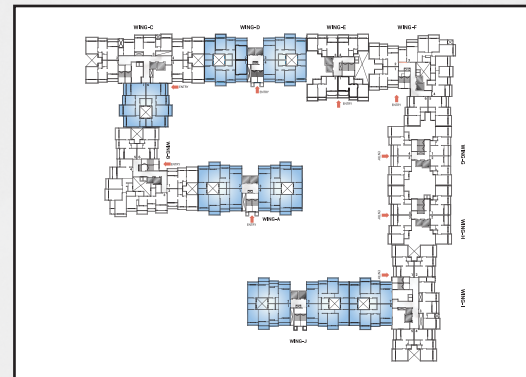
TYPE	2BHK
CARPET AREA	45.5
ENCLOSED AREA	3.55
FLOWER BED	3.42
DRY BALCONY	1.27
NICHE	2.75
TOTAL AREA	608



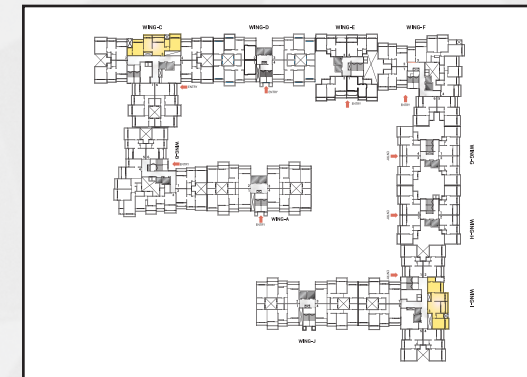
434* sq. ft.
1 Bedroom / 1 Bathroom



470** sq. ft.
1 Bedroom / 2 Bathrooms

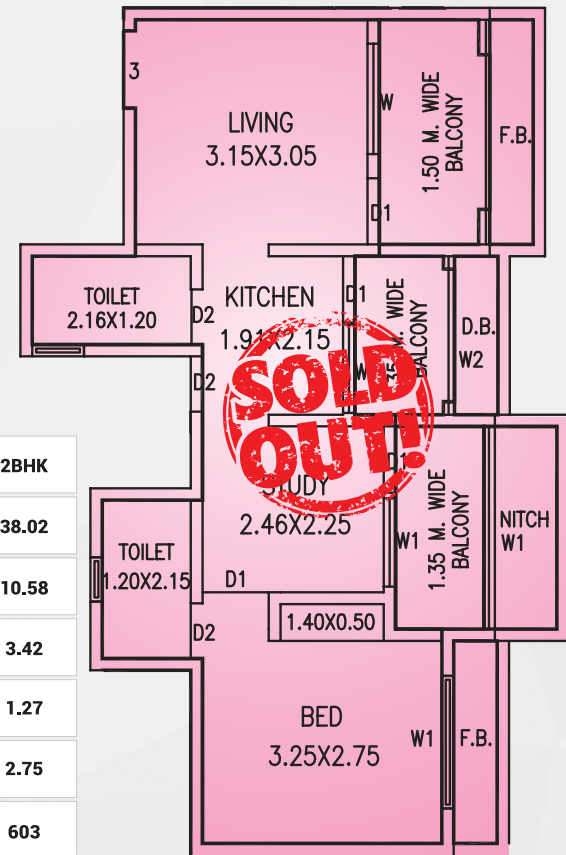


664** sq. ft.
2 Bedroom / 2 Bathrooms



608* sq. ft.
2 Bedroom / 2 Bathroom

2BHK

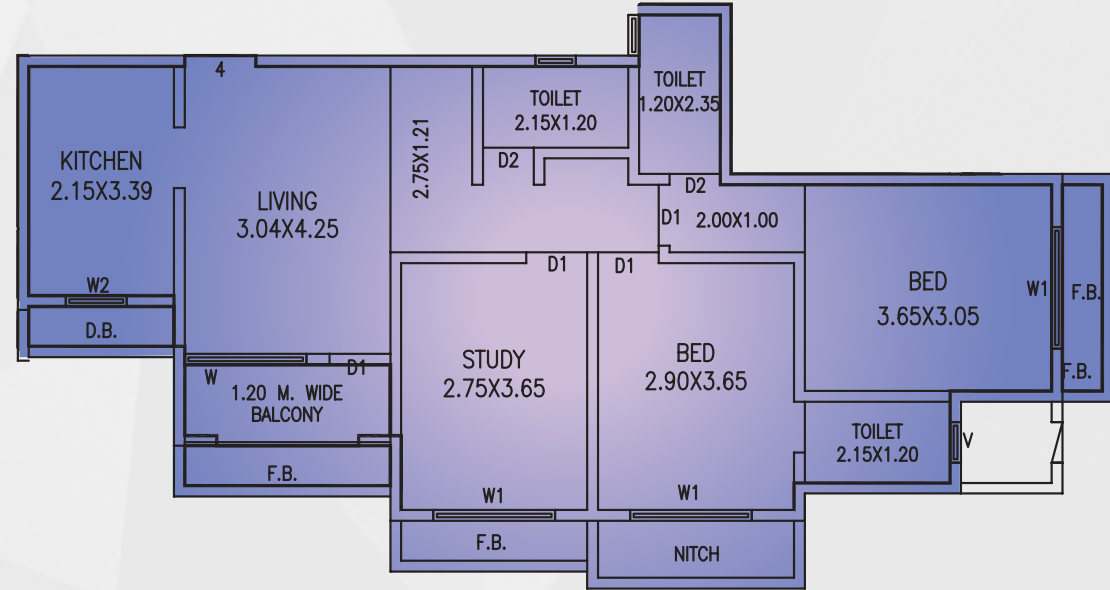


TYPE	2BHK
CARPET AREA	38.02
ENCLOSED AREA	10.58
FLOWER BED	3.42
DRY BALCONY	1.27
NICHE	2.75
TOTAL AREA	603

SOLD OUT!

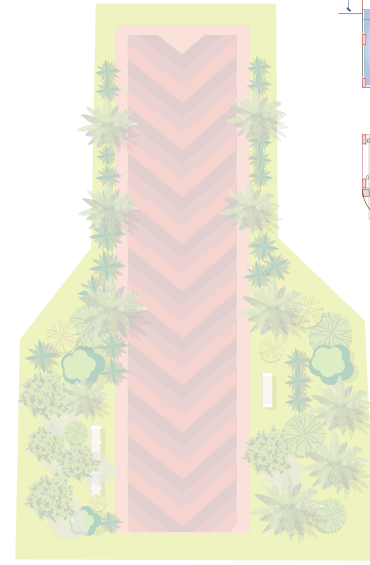
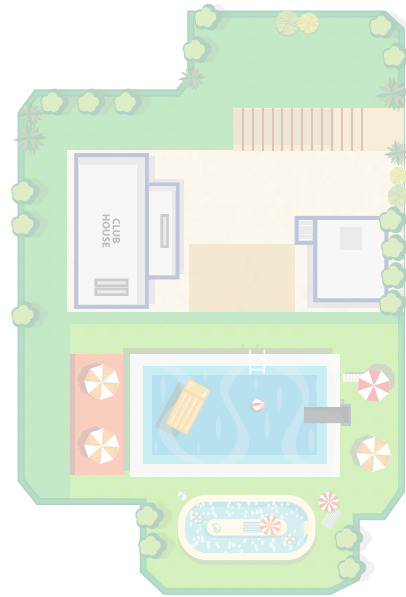
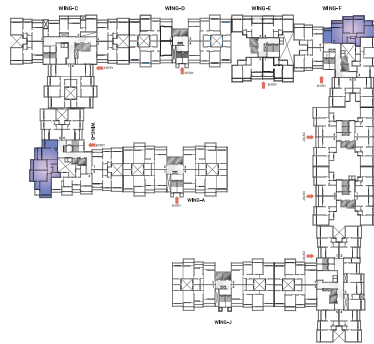
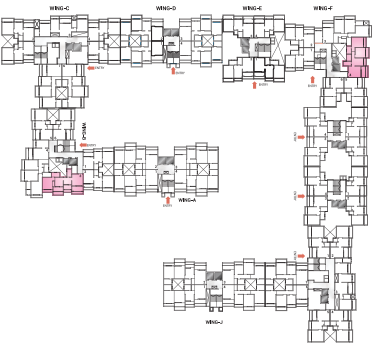
608* sq. ft.
2 Bedroom / 2 Bathroom

3BHK



TYPE	CARPET AREA	ENCLOSED AREA	FLOWER BED	DRY BALCONY	NICHE	TOTAL AREA
3BHK	74.28	3.5	5.2	1.27	2.9	938

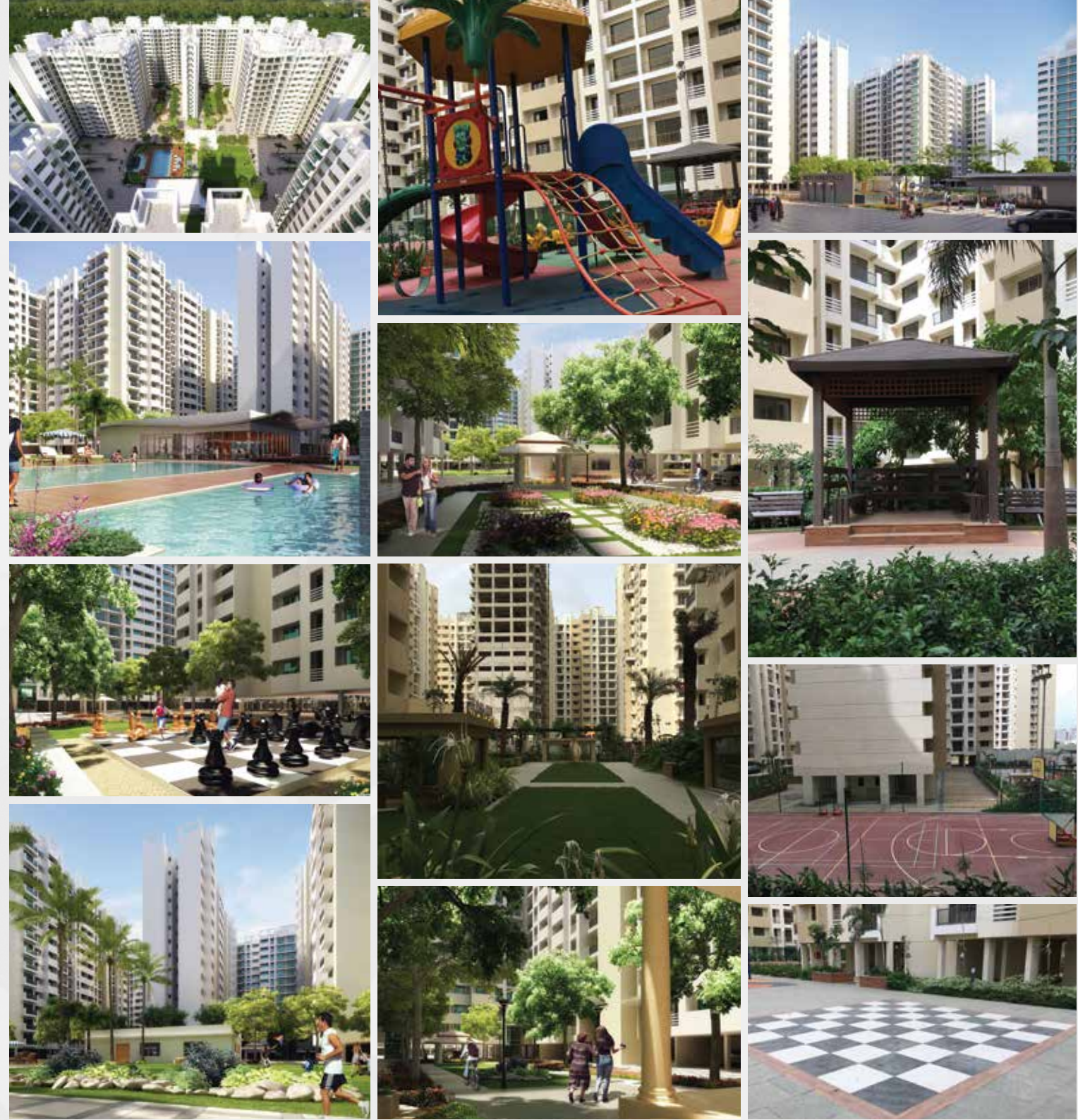
938* sq. ft.
3 Bedroom / 3 Bathroom



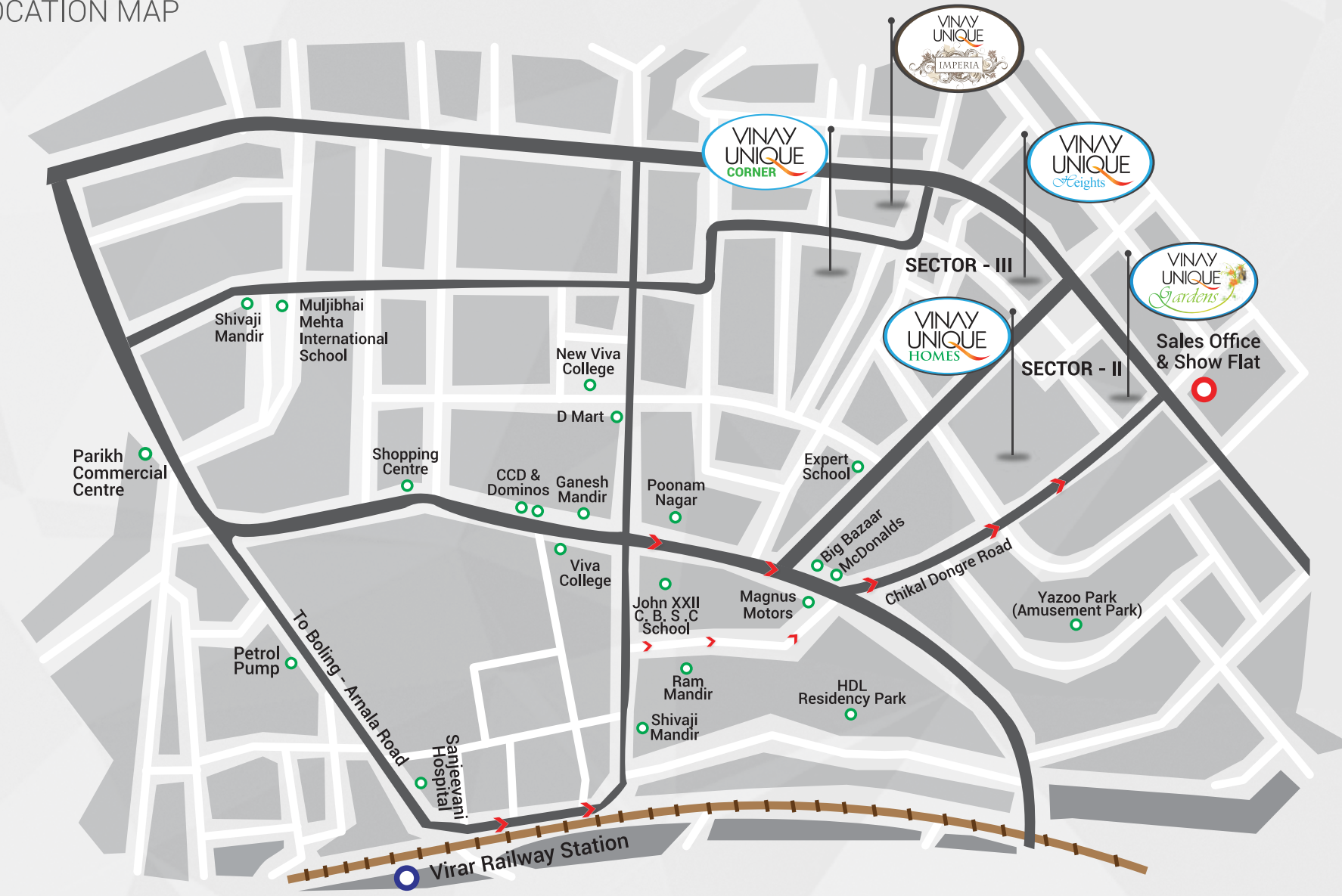
LAYOUT FOR SHOPS

INTERNAL AMENITIES

- Modular Kitchen with Granite Top & SS sink
- Loft
- Ceramic tiles upto 2' height in kitchen
- Water Purifier
- Semi modular switches
- Designer bathroom tiles upto door height
- Premium sanitary fittings
- Instant Geyser
- Vitrified flooring in flat
- Additional Security door
- Plastered smooth finish paint
- Inverter
- Anodised sliding windows
- Granite window sills



LOCATION MAP



LOCATED AT VIRAR (W)

- 1.9 km from Virar Railway Station
- 0.4 km from Yazoo park
- 0.8 km from D-Mart
- Schools, Malls, Hospitals within 3 km
- 10.8 km from Western Express Highway
- 4 km from Jivdani Temple
- 9 km from Arnala Beach